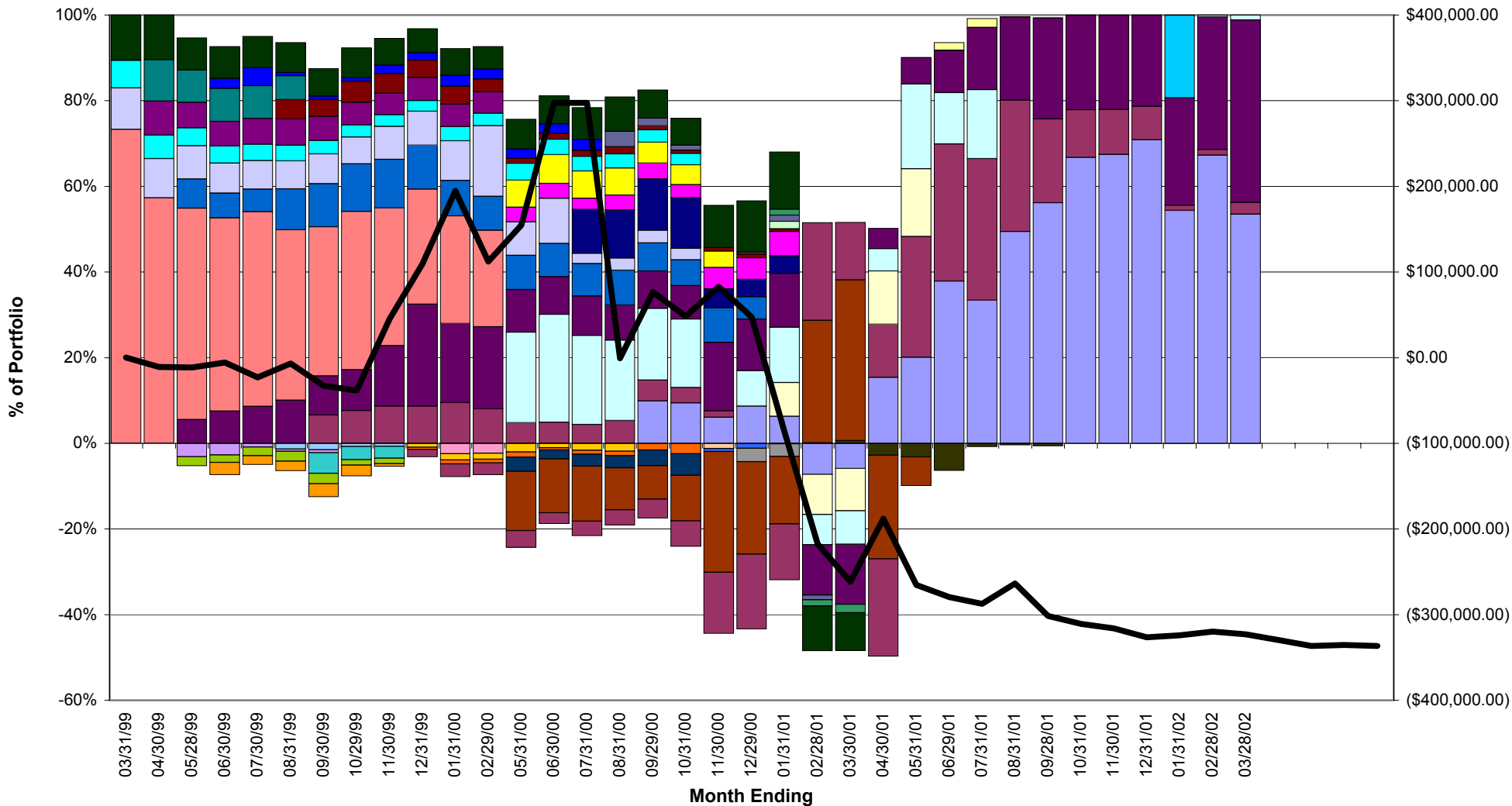


CONCENTRATION ANALYSIS WITH CUMULATIVE P & L

INVESTOR V. BROKERAGE FIRM
Account Number: AB-12346



ABGENIX INC	GLOBAL CROSSING LTD	AOL TIME WARNER INC	WORLDCOM INC	QUALCOMM INC	MCI WORLDCOM INC
AMERICA ONLINE INC	3COM CORP	PALM INC	WIND RIVER SYSTEMS INC	VIACOM INC B NON VTG	WALT DISNEY CO HOLDING CO
CBS CORP	STAR TELECOMMUNICATIONS	FRONTIER CORP	WORLDPORT COMMUNICATIONS INC	WORLDCOM INC 200202 10 CALL	MSH ENTERTAINMENT CORP
LONDON PAC GROUP LTD SPON ADR	WORLDCOM INC GA NEW MCI GROUP	MCI WORLDCOM INC 200101 60 PUT	MCI WORLDCOM INC 200201 40 150 SHS PUT	PSINET INC 199910 30 PUT	QUALCOMM INC 200201 150 CALL
ABGENIX INC 200104 80 CALL	MCI WORLDCOM INC 200201 65 PUT	MCI WORLDCOM INC 200101 70 PUT	MCI WORLDCOM INC 200101 46.625 150 SHS PUT	PSINET INC 200001 45 PUT	MCI WORLDCOM INC 200101 40 150 SHS PUT
PSINET INC	QUALCOMM INC 200301 140 CALL	WORLDCOM INC 200201 40 150 SHS PUT	KVH INDUSTRIES INC	CITIGROUP INC	ABGENIX INC 200110 45 CALL
GLOBAL CROSSING LTD 200201 35 PUT	MCI WORLDCOM INC 200201 43.375 150 SHS PUT	Cumulative P&L			

CONCENTRATION ANALYSIS RAW DATA

INVESTOR V. BROKERAGE FIRM
Account Number: AB-12346

Month Ending	Issue	Value	% of Portfolio
03/31/1999	3COM CORP	\$23,312.50	9.65%
03/31/1999	CITIGROUP INC	\$25,550.00	10.58%
03/31/1999	MCI WORLDCOM INC	\$177,125.00	73.33%
03/31/1999	WALT DISNEY CO HOLDING CO	\$15,562.50	6.44%
04/30/1999	3COM CORP	\$26,125.00	9.11%
04/30/1999	CBS CORP	\$22,750.00	7.94%
04/30/1999	CITIGROUP INC	\$29,950.00	10.45%
04/30/1999	FRONTIER CORP	\$27,593.75	9.63%
04/30/1999	MCI WORLDCOM INC	\$164,375.00	57.34%
04/30/1999	WALT DISNEY CO HOLDING CO	\$15,875.00	5.54%
05/28/1999	3COM CORP	\$27,312.50	8.72%
05/28/1999	AMERICA ONLINE INC	\$23,850.00	7.62%
05/28/1999	CBS CORP	\$20,875.00	6.67%
05/28/1999	CITIGROUP INC	\$26,500.00	8.47%
05/28/1999	FRONTIER CORP	\$26,312.50	8.41%
05/28/1999	MCI WORLDCOM INC	\$172,750.00	55.18%
05/28/1999	MCI WORLDCOM INC 200101 70 PUT	(\$7,625.00)	-2.44%
05/28/1999	PSINET INC 199910 30 PUT	(\$10,937.50)	-3.49%
05/28/1999	QUALCOMM INC	\$19,450.00	6.21%
05/28/1999	WALT DISNEY CO HOLDING CO	\$14,562.50	4.65%
06/30/1999	3COM CORP	\$26,687.50	8.20%
06/30/1999	AMERICA ONLINE INC	\$22,000.00	6.76%
06/30/1999	CBS CORP	\$21,781.25	6.70%
06/30/1999	CITIGROUP INC	\$28,500.00	8.76%
06/30/1999	FRONTIER CORP	\$29,312.50	9.01%
06/30/1999	MCI WORLDCOM INC	\$172,125.00	52.91%
06/30/1999	MCI WORLDCOM INC 200101 70 PUT	(\$6,750.00)	-2.07%
06/30/1999	PSINET INC 199910 30 PUT	(\$10,312.50)	-3.17%
06/30/1999	PSINET INC 200001 45 PUT	(\$11,000.00)	-3.38%
06/30/1999	QUALCOMM INC	\$28,700.00	8.82%
06/30/1999	WALT DISNEY CO HOLDING CO	\$15,406.25	4.74%
06/30/1999	WORLDPORT COMMUNICATIONS INC	\$8,875.00	2.73%
07/30/1999	3COM CORP	\$24,125.00	7.39%
07/30/1999	AMERICA ONLINE INC	\$19,025.00	5.83%
07/30/1999	CBS CORP	\$21,968.75	6.73%
07/30/1999	CITIGROUP INC	\$26,737.50	8.19%
07/30/1999	FRONTIER CORP	\$27,718.75	8.49%
07/30/1999	MCI WORLDCOM INC	\$165,000.00	50.54%
07/30/1999	MCI WORLDCOM INC 200101 70 PUT	(\$7,375.00)	-2.26%
07/30/1999	PSINET INC 199910 30 PUT	(\$3,125.00)	-0.96%
07/30/1999	PSINET INC 200001 45 PUT	(\$7,562.50)	-2.32%
07/30/1999	QUALCOMM INC	\$31,200.00	9.56%
07/30/1999	WALT DISNEY CO HOLDING CO	\$13,781.25	4.22%
07/30/1999	WORLDPORT COMMUNICATIONS INC	\$15,000.00	4.59%
08/31/1999	3COM CORP	\$24,812.50	7.47%
08/31/1999	AMERICA ONLINE INC	\$36,525.00	11.00%

CONCENTRATION ANALYSIS RAW DATA

INVESTOR V. BROKERAGE FIRM

Account Number: AB-12346

Month Ending	Issue	Value	% of Portfolio
08/31/1999	CBS CORP	\$23,500.00	7.07%
08/31/1999	CITIGROUP INC	\$26,662.50	8.03%
08/31/1999	FRONTIER CORP	\$21,062.50	6.34%
08/31/1999	MCI WORLDCOM INC	\$151,500.00	45.61%
08/31/1999	MCI WORLDCOM INC 200101 60 PUT	(\$5,187.50)	-1.56%
08/31/1999	MCI WORLDCOM INC 200101 70 PUT	(\$8,875.00)	-2.67%
08/31/1999	PSINET INC 199910 30 PUT	(\$1,875.00)	-0.56%
08/31/1999	PSINET INC 200001 45 PUT	(\$8,500.00)	-2.56%
08/31/1999	QUALCOMM INC	\$38,437.50	11.57%
08/31/1999	STAR TELECOMMUNICATIONS	\$17,250.00	5.19%
08/31/1999	WALT DISNEY CO HOLDING CO	\$13,875.00	4.18%
08/31/1999	WORLDPORT COMMUNICATIONS INC	\$2,968.75	0.89%
09/30/1999	3COM CORP	\$28,750.00	9.29%
09/30/1999	AMERICA ONLINE INC	\$41,625.00	13.45%
09/30/1999	CBS CORP	\$23,125.00	7.47%
09/30/1999	CITIGROUP INC	\$26,400.00	8.53%
09/30/1999	GLOBAL CROSSING LTD	\$27,162.50	8.77%
09/30/1999	MCI WORLDCOM INC	\$143,750.00	46.44%
09/30/1999	MCI WORLDCOM INC 200101 60 PUT	(\$6,187.50)	-2.00%
09/30/1999	MCI WORLDCOM INC 200101 70 PUT	(\$10,125.00)	-3.27%
09/30/1999	MCI WORLDCOM INC 200201 65 PUT	(\$20,000.00)	-6.46%
09/30/1999	PSINET INC 199910 30 PUT	(\$2,812.50)	-0.91%
09/30/1999	PSINET INC 200001 45 PUT	(\$12,625.00)	-4.08%
09/30/1999	QUALCOMM INC	\$37,837.50	12.22%
09/30/1999	STAR TELECOMMUNICATIONS	\$16,218.75	5.24%
09/30/1999	WALT DISNEY CO HOLDING CO	\$13,000.00	4.20%
09/30/1999	WORLDPORT COMMUNICATIONS INC	\$3,450.00	1.11%
10/29/1999	3COM CORP	\$29,000.00	7.36%
10/29/1999	AMERICA ONLINE INC	\$51,725.00	13.13%
10/29/1999	CBS CORP	\$24,406.25	6.20%
10/29/1999	CITIGROUP INC	\$32,550.00	8.26%
10/29/1999	GLOBAL CROSSING LTD	\$35,490.63	9.01%
10/29/1999	MCI WORLDCOM INC	\$171,625.00	43.57%
10/29/1999	MCI WORLDCOM INC 200101 60 PUT	(\$3,562.50)	-0.90%
10/29/1999	MCI WORLDCOM INC 200101 70 PUT	(\$5,875.00)	-1.49%
10/29/1999	MCI WORLDCOM INC 200201 65 PUT	(\$14,250.00)	-3.62%
10/29/1999	PSINET INC 200001 45 PUT	(\$11,750.00)	-2.98%
10/29/1999	QUALCOMM INC	\$44,550.00	11.31%
10/29/1999	STAR TELECOMMUNICATIONS	\$22,875.00	5.81%
10/29/1999	WALT DISNEY CO HOLDING CO	\$13,250.00	3.36%
10/29/1999	WORLDPORT COMMUNICATIONS INC	\$3,900.00	0.99%
11/30/1999	3COM CORP	\$39,812.50	8.68%
11/30/1999	AMERICA ONLINE INC	\$58,300.00	12.71%
11/30/1999	CBS CORP	\$25,947.30	5.66%
11/30/1999	CITIGROUP INC	\$32,325.00	7.05%
11/30/1999	GLOBAL CROSSING LTD	\$44,715.63	9.75%

CONCENTRATION ANALYSIS RAW DATA

INVESTOR V. BROKERAGE FIRM

Account Number: AB-12346

Month Ending	Issue	Value	% of Portfolio
11/30/1999	MCI WORLDCOM INC	\$165,375.00	36.07%
11/30/1999	MCI WORLDCOM INC 200101 60 PUT	(\$3,562.50)	-0.78%
11/30/1999	MCI WORLDCOM INC 200101 70 PUT	(\$6,500.00)	-1.42%
11/30/1999	MCI WORLDCOM INC 200201 65 PUT	(\$14,250.00)	-3.11%
11/30/1999	PSINET INC 200001 45 PUT	(\$3,562.50)	-0.78%
11/30/1999	QUALCOMM INC	\$72,462.50	15.80%
11/30/1999	STAR TELECOMMUNICATIONS	\$23,531.25	5.13%
11/30/1999	WALT DISNEY CO HOLDING CO	\$13,937.50	3.04%
11/30/1999	WORLDPORT COMMUNICATIONS INC	\$10,000.00	2.18%
12/31/1999	3COM CORP	\$47,000.00	8.48%
12/31/1999	AMERICA ONLINE INC	\$60,700.00	10.95%
12/31/1999	CBS CORP	\$31,968.75	5.77%
12/31/1999	CITIGROUP INC	\$33,412.50	6.03%
12/31/1999	GLOBAL CROSSING LTD	\$51,250.00	9.24%
12/31/1999	MCI WORLDCOM INC	\$159,187.50	28.71%
12/31/1999	MCI WORLDCOM INC 200101 40 150 SHS PUT	(\$2,937.50)	-0.53%
12/31/1999	MCI WORLDCOM INC 200101 46.625 150 SHS PUT	(\$5,375.00)	-0.97%
12/31/1999	MCI WORLDCOM INC 200201 43.375 150 SHS PUT	(\$10,125.00)	-1.83%
12/31/1999	PSINET INC 200001 45 PUT	(\$312.50)	-0.06%
12/31/1999	QUALCOMM INC	\$140,900.00	25.41%
12/31/1999	STAR TELECOMMUNICATIONS	\$23,718.75	4.28%
12/31/1999	WALT DISNEY CO HOLDING CO	\$14,625.00	2.64%
12/31/1999	WORLDPORT COMMUNICATIONS INC	\$10,390.65	1.87%
01/31/2000	3COM CORP	\$50,750.00	10.96%
01/31/2000	AMERICA ONLINE INC	\$45,550.00	9.84%
01/31/2000	CBS CORP	\$29,156.25	6.30%
01/31/2000	CITIGROUP INC	\$34,200.00	7.39%
01/31/2000	GLOBAL CROSSING LTD	\$52,018.75	11.24%
01/31/2000	MCI WORLDCOM INC	\$137,812.50	29.77%
01/31/2000	MCI WORLDCOM INC 200101 40 150 SHS PUT	(\$5,062.50)	-1.09%
01/31/2000	MCI WORLDCOM INC 200101 46.625 150 SHS PUT	(\$8,000.00)	-1.73%
01/31/2000	MCI WORLDCOM INC 200201 40 150 SHS PUT	(\$13,500.00)	-2.92%
01/31/2000	MCI WORLDCOM INC 200201 43.375 150 SHS PUT	(\$16,500.00)	-3.56%
01/31/2000	QUALCOMM INC	\$101,600.00	21.95%
01/31/2000	STAR TELECOMMUNICATIONS	\$22,875.00	4.94%
01/31/2000	WALT DISNEY CO HOLDING CO	\$18,156.25	3.92%
01/31/2000	WORLDPORT COMMUNICATIONS INC	\$13,906.25	3.00%
02/29/2000	3COM CORP	\$98,000.00	19.35%
02/29/2000	AMERICA ONLINE INC	\$47,150.00	9.31%
02/29/2000	CBS CORP	\$29,781.25	5.88%
02/29/2000	CITIGROUP INC	\$31,050.00	6.13%
02/29/2000	GLOBAL CROSSING LTD	\$47,790.63	9.43%
02/29/2000	MCI WORLDCOM INC	\$133,875.00	26.43%
02/29/2000	MCI WORLDCOM INC 200101 40 150 SHS PUT	(\$5,062.50)	-1.00%
02/29/2000	MCI WORLDCOM INC 200101 46.625 150 SHS PUT	(\$8,250.00)	-1.63%
02/29/2000	MCI WORLDCOM INC 200201 40 150 SHS PUT	(\$13,750.00)	-2.71%

CONCENTRATION ANALYSIS RAW DATA

INVESTOR V. BROKERAGE FIRM

Account Number: AB-12346

Month Ending	Issue	Value	% of Portfolio
02/29/2000	MCI WORLDCOM INC 200201 43.375 150 SHS PUT	(\$16,750.00)	-3.31%
02/29/2000	QUALCOMM INC	\$113,950.00	22.50%
02/29/2000	STAR TELECOMMUNICATIONS	\$18,000.00	3.55%
02/29/2000	WALT DISNEY CO HOLDING CO	\$17,000.00	3.36%
02/29/2000	WORLDPORT COMMUNICATIONS INC	\$13,750.00	2.71%
05/31/2000	3COM CORP	\$41,812.50	15.24%
05/31/2000	AMERICA ONLINE INC	\$42,700.00	15.56%
05/31/2000	CITIGROUP INC	\$37,312.50	13.60%
05/31/2000	GLOBAL CROSSING LTD	\$25,689.06	9.36%
05/31/2000	GLOBAL CROSSING LTD 200201 35 PUT	(\$73,750.00)	-26.88%
05/31/2000	MCI WORLDCOM INC 200101 40 150 SHS PUT	(\$6,500.00)	-2.37%
05/31/2000	MCI WORLDCOM INC 200101 46.625 150 SHS PUT	(\$11,000.00)	-4.01%
05/31/2000	MCI WORLDCOM INC 200201 43.375 150 SHS PUT	(\$21,000.00)	-7.65%
05/31/2000	QUALCOMM INC	\$53,100.00	19.35%
05/31/2000	STAR TELECOMMUNICATIONS	\$6,562.50	2.39%
05/31/2000	VIACOM INC B NON VTG	\$33,604.00	12.25%
05/31/2000	WALT DISNEY CO HOLDING CO	\$21,093.75	7.69%
05/31/2000	WIND RIVER SYSTEMS INC	\$18,125.00	6.61%
05/31/2000	WORLDCOM INC	\$112,875.00	41.14%
05/31/2000	WORLDCOM INC 200201 40 150 SHS PUT	(\$17,500.00)	-6.38%
05/31/2000	WORLDPORT COMMUNICATIONS INC	\$11,250.00	4.10%
06/30/2000	3COM CORP	\$57,625.00	16.90%
06/30/2000	AMERICA ONLINE INC	\$42,300.00	12.40%
06/30/2000	CITIGROUP INC	\$36,150.00	10.60%
06/30/2000	GLOBAL CROSSING LTD	\$26,970.31	7.91%
06/30/2000	GLOBAL CROSSING LTD 200201 35 PUT	(\$68,750.00)	-20.16%
06/30/2000	MCI WORLDCOM INC 200101 40 150 SHS PUT	(\$2,812.50)	-0.82%
06/30/2000	MCI WORLDCOM INC 200101 46.625 150 SHS PUT	(\$5,875.00)	-1.72%
06/30/2000	MCI WORLDCOM INC 200201 43.375 150 SHS PUT	(\$14,000.00)	-4.10%
06/30/2000	QUALCOMM INC	\$48,000.00	14.07%
06/30/2000	STAR TELECOMMUNICATIONS	\$7,593.75	2.23%
06/30/2000	VIACOM INC B NON VTG	\$36,957.63	10.84%
06/30/2000	WALT DISNEY CO HOLDING CO	\$19,406.25	5.69%
06/30/2000	WIND RIVER SYSTEMS INC	\$18,937.50	5.55%
06/30/2000	WORLDCOM INC	\$137,625.00	40.35%
06/30/2000	WORLDCOM INC 200201 40 150 SHS PUT	(\$11,250.00)	-3.30%
06/30/2000	WORLDPORT COMMUNICATIONS INC	\$12,187.50	3.57%
07/31/2000	3COM CORP	\$13,562.50	4.23%
07/31/2000	AMERICA ONLINE INC	\$42,600.00	13.29%
07/31/2000	CITIGROUP INC	\$42,300.00	13.20%
07/31/2000	GLOBAL CROSSING LTD	\$24,920.31	7.78%
07/31/2000	GLOBAL CROSSING LTD 200201 35 PUT	(\$72,500.00)	-22.62%
07/31/2000	MCI WORLDCOM INC 200101 40 150 SHS PUT	(\$5,187.50)	-1.62%
07/31/2000	MCI WORLDCOM INC 200101 46.625 150 SHS PUT	(\$9,125.00)	-2.85%
07/31/2000	MCI WORLDCOM INC 200201 43.375 150 SHS PUT	(\$19,250.00)	-6.01%
07/31/2000	PALM INC	\$57,837.00	18.05%

CONCENTRATION ANALYSIS RAW DATA

INVESTOR V. BROKERAGE FIRM

Account Number: AB-12346

Month Ending	Issue	Value	% of Portfolio
07/31/2000	QUALCOMM INC	\$51,950.00	16.21%
07/31/2000	STAR TELECOMMUNICATIONS	\$7,687.50	2.40%
07/31/2000	VIACOM INC B NON VTG	\$35,941.38	11.21%
07/31/2000	WALT DISNEY CO HOLDING CO	\$19,281.25	6.02%
07/31/2000	WIND RIVER SYSTEMS INC	\$14,656.25	4.57%
07/31/2000	WORLDCOM INC	\$117,187.50	36.57%
07/31/2000	WORLDCOM INC 200201 40 150 SHS PUT	(\$15,750.00)	-4.91%
07/31/2000	WORLDPORT COMMUNICATIONS INC	\$14,375.00	4.49%
08/31/2000	3COM CORP	\$16,625.00	4.62%
08/31/2000	AMERICA ONLINE INC	\$47,150.00	13.11%
08/31/2000	CITIGROUP INC	\$46,715.68	12.99%
08/31/2000	GLOBAL CROSSING LTD	\$30,814.06	8.57%
08/31/2000	GLOBAL CROSSING LTD 200201 35 PUT	(\$56,875.00)	-15.82%
08/31/2000	MCI WORLDCOM INC 200101 40 150 SHS PUT	(\$6,000.00)	-1.67%
08/31/2000	MCI WORLDCOM INC 200101 46.625 150 SHS PUT	(\$10,875.00)	-3.02%
08/31/2000	MCI WORLDCOM INC 200201 43.375 150 SHS PUT	(\$21,000.00)	-5.84%
08/31/2000	PALM INC	\$65,252.00	18.15%
08/31/2000	PSINET INC	\$21,075.00	5.86%
08/31/2000	QUALCOMM INC	\$47,900.00	13.32%
08/31/2000	STAR TELECOMMUNICATIONS	\$9,562.50	2.66%
08/31/2000	VIACOM INC B NON VTG	\$36,494.00	10.15%
08/31/2000	WALT DISNEY CO HOLDING CO	\$19,478.55	5.42%
08/31/2000	WIND RIVER SYSTEMS INC	\$20,375.00	5.67%
08/31/2000	WORLDCOM INC	\$109,500.00	30.45%
08/31/2000	WORLDCOM INC 200201 40 150 SHS PUT	(\$16,625.00)	-4.62%
09/29/2000	3COM CORP	\$19,187.50	4.52%
09/29/2000	ABGENIX INC	\$64,650.00	15.22%
09/29/2000	AMERICA ONLINE INC	\$42,920.00	10.11%
09/29/2000	CITIGROUP INC	\$43,250.00	10.18%
09/29/2000	GLOBAL CROSSING LTD	\$31,775.00	7.48%
09/29/2000	GLOBAL CROSSING LTD 200201 35 PUT	(\$50,937.50)	-11.99%
09/29/2000	MCI WORLDCOM INC 200101 40 150 SHS PUT	(\$10,125.00)	-2.38%
09/29/2000	MCI WORLDCOM INC 200201 43.375 150 SHS PUT	(\$29,250.00)	-6.89%
09/29/2000	PALM INC	\$78,506.31	18.49%
09/29/2000	PSINET INC	\$11,550.00	2.72%
09/29/2000	QUALCOMM INC	\$57,000.00	13.42%
09/29/2000	STAR TELECOMMUNICATIONS	\$6,000.00	1.41%
09/29/2000	VIACOM INC B NON VTG	\$31,707.00	7.47%
09/29/2000	WALT DISNEY CO HOLDING CO	\$19,125.00	4.50%
09/29/2000	WIND RIVER SYSTEMS INC	\$23,968.75	5.64%
09/29/2000	WORLDCOM INC	\$109,350.00	25.75%
09/29/2000	WORLDCOM INC 200201 40 150 SHS PUT	(\$24,000.00)	-5.65%
10/31/2000	3COM CORP	\$17,750.00	5.12%
10/31/2000	ABGENIX INC	\$63,100.00	18.19%
10/31/2000	AMERICA ONLINE INC	\$40,400.00	11.65%
10/31/2000	CITIGROUP INC	\$42,100.00	12.14%

CONCENTRATION ANALYSIS RAW DATA

INVESTOR V. BROKERAGE FIRM

Account Number: AB-12346

Month Ending	Issue	Value	% of Portfolio
10/31/2000	GLOBAL CROSSING LTD	\$24,215.63	6.98%
10/31/2000	GLOBAL CROSSING LTD 200201 35 PUT	(\$71,250.00)	-20.54%
10/31/2000	MCI WORLDCOM INC 200101 40 150 SHS PUT	(\$16,250.00)	-4.69%
10/31/2000	MCI WORLDCOM INC 200201 43.375 150 SHS PUT	(\$40,000.00)	-11.53%
10/31/2000	PALM INC	\$79,433.19	22.90%
10/31/2000	PSINET INC	\$7,987.56	2.30%
10/31/2000	QUALCOMM INC	\$52,087.52	15.02%
10/31/2000	STAR TELECOMMUNICATIONS	\$4,875.00	1.41%
10/31/2000	VIACOM INC B NON VTG	\$30,826.25	8.89%
10/31/2000	WALT DISNEY CO HOLDING CO	\$17,906.25	5.16%
10/31/2000	WIND RIVER SYSTEMS INC	\$20,531.25	5.92%
10/31/2000	WORLDCOM INC	\$106,875.00	30.81%
10/31/2000	WORLDCOM INC 200201 40 150 SHS PUT	(\$33,750.00)	-9.73%
11/30/2000	ABGENIX INC	\$24,406.25	54.16%
11/30/2000	ABGENIX INC 200104 80 CALL	(\$2,687.50)	-5.96%
11/30/2000	AMERICA ONLINE INC	\$32,488.00	72.09%
11/30/2000	CITIGROUP INC	\$39,850.00	88.43%
11/30/2000	GLOBAL CROSSING LTD	\$6,187.50	13.73%
11/30/2000	GLOBAL CROSSING LTD 200201 35 PUT	(\$113,750.00)	-252.42%
11/30/2000	MCI WORLDCOM INC 200201 43.375 150 SHS PUT	(\$57,500.00)	-127.60%
11/30/2000	PALM INC	\$18,093.75	40.15%
11/30/2000	QUALCOMM INC	\$64,200.00	142.47%
11/30/2000	QUALCOMM INC 200201 150 CALL	(\$4,937.50)	-10.96%
11/30/2000	STAR TELECOMMUNICATIONS	\$3,375.00	7.49%
11/30/2000	VIACOM INC B NON VTG	\$15,337.50	34.04%
11/30/2000	WIND RIVER SYSTEMS INC	\$20,000.00	44.38%
12/29/2000	ABGENIX INC	\$29,531.25	65.37%
12/29/2000	ABGENIX INC 200104 80 CALL	(\$3,937.50)	-8.72%
12/29/2000	AMERICA ONLINE INC	\$17,400.00	38.52%
12/29/2000	CITIGROUP INC	\$40,850.00	90.43%
12/29/2000	GLOBAL CROSSING LTD 200201 35 PUT	(\$73,500.00)	-162.70%
12/29/2000	MCI WORLDCOM INC 200201 43.375 150 SHS PUT	(\$59,500.00)	-131.71%
12/29/2000	MSH ENTERTAINMENT CORP	\$80.00	0.18%
12/29/2000	PALM INC	\$14,156.25	31.34%
12/29/2000	PSINET INC	\$1,437.60	3.18%
12/29/2000	QUALCOMM INC	\$41,093.75	90.97%
12/29/2000	QUALCOMM INC 200301 140 CALL	(\$10,625.00)	-23.52%
12/29/2000	STAR TELECOMMUNICATIONS	\$3,000.00	6.64%
12/29/2000	WIND RIVER SYSTEMS INC	\$17,062.50	37.77%
12/29/2000	WORLDCOM INC	\$28,125.00	62.26%
01/31/2001	ABGENIX INC	\$21,000.00	17.42%
01/31/2001	ABGENIX INC 200104 80 CALL	(\$421.88)	-0.35%
01/31/2001	AOL TIME WARNER INC	\$26,280.00	21.80%
01/31/2001	CITIGROUP INC	\$44,776.00	37.15%
01/31/2001	GLOBAL CROSSING LTD 200201 35 PUT	(\$52,500.00)	-43.56%
01/31/2001	KVH INDUSTRIES INC	\$4,656.25	3.86%

CONCENTRATION ANALYSIS RAW DATA

INVESTOR V. BROKERAGE FIRM

Account Number: AB-12346

Month Ending	Issue	Value	% of Portfolio
01/31/2001	LONDON PAC GROUP LTD SPON ADR	\$5,840.00	4.85%
01/31/2001	MCI WORLDCOM INC 200201 43.375 150 SHS PUT	(\$43,750.00)	-36.30%
01/31/2001	MSH ENTERTAINMENT CORP	\$150.00	0.12%
01/31/2001	PALM INC	\$13,562.50	11.25%
01/31/2001	PSINET INC	\$4,750.00	3.94%
01/31/2001	QUALCOMM INC	\$42,031.25	34.87%
01/31/2001	QUALCOMM INC 200301 140 CALL	(\$9,937.50)	-8.24%
01/31/2001	STAR TELECOMMUNICATIONS	\$1,968.75	1.63%
01/31/2001	WIND RIVER SYSTEMS INC	\$19,000.00	15.76%
01/31/2001	WORLDCOM INC	\$43,125.00	35.78%
02/28/2001	ABGENIX INC	\$17,000.00	-236.81%
02/28/2001	ABGENIX INC 200104 80 CALL	(\$250.00)	3.48%
02/28/2001	AOL TIME WARNER INC	\$22,015.00	-306.67%
02/28/2001	CITIGROUP INC	\$24,590.00	-342.54%
02/28/2001	GLOBAL CROSSING LTD 200201 35 PUT	(\$67,200.00)	936.11%
02/28/2001	KVH INDUSTRIES INC	\$3,437.50	-47.89%
02/28/2001	MCI WORLDCOM INC 200201 43.375 150 SHS PUT	(\$53,500.00)	745.27%
02/28/2001	MSH ENTERTAINMENT CORP	\$135.00	-1.88%
02/28/2001	PSINET INC	\$2,562.60	-35.70%
02/28/2001	QUALCOMM INC	\$27,406.25	-381.77%
02/28/2001	WORLDCOM INC	\$16,625.00	-231.59%
03/30/2001	ABGENIX INC	\$11,843.75	-186.63%
03/30/2001	ABGENIX INC 200110 45 CALL	(\$1,281.25)	20.19%
03/30/2001	AOL TIME WARNER INC	\$20,075.00	-316.33%
03/30/2001	CITIGROUP INC	\$17,992.00	-283.51%
03/30/2001	GLOBAL CROSSING LTD 200201 35 PUT	(\$75,950.00)	1196.79%
03/30/2001	KVH INDUSTRIES INC	\$3,937.50	-62.05%
03/30/2001	MCI WORLDCOM INC 200201 43.375 150 SHS PUT	(\$27,225.00)	429.00%
03/30/2001	MSH ENTERTAINMENT CORP	\$65.00	-1.02%
03/30/2001	QUALCOMM INC	\$28,312.50	-446.14%
03/30/2001	WORLDCOM INC	\$15,884.38	-250.30%
04/30/2001	ABGENIX INC	\$18,750.00	3475.44%
04/30/2001	ABGENIX INC 200110 45 CALL	(\$3,400.00)	-630.21%
04/30/2001	AOL TIME WARNER INC	\$15,150.00	2808.16%
04/30/2001	GLOBAL CROSSING LTD	\$15,036.00	2787.03%
04/30/2001	GLOBAL CROSSING LTD 200201 35 PUT	(\$29,445.00)	-5457.83%
04/30/2001	MCI WORLDCOM INC 200201 43.375 150 SHS PUT	(\$27,720.00)	-5138.09%
04/30/2001	MSH ENTERTAINMENT CORP	\$45.00	8.34%
04/30/2001	QUALCOMM INC	\$5,736.00	1063.21%
04/30/2001	WORLDCOM INC	\$6,387.50	1183.97%
05/31/2001	ABGENIX INC	\$19,930.00	25.09%
05/31/2001	ABGENIX INC 200110 45 CALL	(\$3,150.00)	-3.97%
05/31/2001	AOL TIME WARNER INC	\$15,657.00	19.71%
05/31/2001	GLOBAL CROSSING LTD	\$27,940.00	35.17%
05/31/2001	GLOBAL CROSSING LTD 200201 35 PUT	(\$6,675.00)	-8.40%
05/31/2001	MSH ENTERTAINMENT CORP	\$45.00	0.06%

CONCENTRATION ANALYSIS RAW DATA

INVESTOR V. BROKERAGE FIRM
Account Number: AB-12346

Month Ending	Issue	Value	% of Portfolio
05/31/2001	QUALCOMM INC	\$6,074.00	7.65%
05/31/2001	WORLDCOM INC	\$19,624.00	24.70%
06/29/2001	ABGENIX INC	\$22,500.00	43.45%
06/29/2001	ABGENIX INC 200110 45 CALL	(\$3,800.00)	-7.34%
06/29/2001	GLOBAL CROSSING LTD	\$19,008.00	36.71%
06/29/2001	MSH ENTERTAINMENT CORP	\$30.00	0.06%
06/29/2001	QUALCOMM INC	\$5,848.00	11.29%
06/29/2001	WORLDCOM INC	\$7,100.00	13.71%
06/29/2001	WORLDCOM INC GA NEW MCI GROUP	\$1,094.80	2.11%
07/31/2001	ABGENIX INC	\$14,540.00	33.94%
07/31/2001	ABGENIX INC 200110 45 CALL	(\$350.00)	-0.82%
07/31/2001	GLOBAL CROSSING LTD	\$14,410.00	33.63%
07/31/2001	MSH ENTERTAINMENT CORP	\$20.00	0.05%
07/31/2001	QUALCOMM INC	\$6,323.00	14.76%
07/31/2001	WORLDCOM INC	\$7,000.00	16.34%
07/31/2001	WORLDCOM INC GA NEW MCI GROUP	\$903.04	2.11%
08/31/2001	ABGENIX INC	\$14,985.00	49.84%
08/31/2001	ABGENIX INC 200110 45 CALL	(\$125.00)	-0.42%
08/31/2001	GLOBAL CROSSING LTD	\$9,306.00	30.95%
08/31/2001	MSH ENTERTAINMENT CORP	\$15.00	0.05%
08/31/2001	QUALCOMM INC	\$5,885.00	19.57%
09/28/2001	ABGENIX INC	\$11,350.00	56.87%
09/28/2001	ABGENIX INC 200110 45 CALL	(\$125.00)	-0.63%
09/28/2001	GLOBAL CROSSING LTD	\$3,960.00	19.84%
09/28/2001	MSH ENTERTAINMENT CORP	\$20.00	0.10%
09/28/2001	QUALCOMM INC	\$4,754.00	23.82%
10/31/2001	ABGENIX INC	\$14,895.00	66.76%
10/31/2001	GLOBAL CROSSING LTD	\$2,486.00	11.14%
10/31/2001	MSH ENTERTAINMENT CORP	\$17.50	0.08%
10/31/2001	QUALCOMM INC	\$4,912.00	22.02%
11/30/2001	ABGENIX INC	\$18,000.00	67.47%
11/30/2001	GLOBAL CROSSING LTD	\$2,794.00	10.47%
11/30/2001	MSH ENTERTAINMENT CORP	\$12.50	0.05%
11/30/2001	QUALCOMM INC	\$5,872.00	22.01%
12/31/2001	ABGENIX INC	\$16,820.00	70.88%
12/31/2001	GLOBAL CROSSING LTD	\$1,848.00	7.79%
12/31/2001	MSH ENTERTAINMENT CORP	\$12.50	0.05%
12/31/2001	QUALCOMM INC	\$5,050.00	21.28%
01/31/2002	ABGENIX INC	\$9,532.00	54.34%
01/31/2002	GLOBAL CROSSING LTD	\$213.40	1.22%
01/31/2002	MSH ENTERTAINMENT CORP	\$15.00	0.09%
01/31/2002	QUALCOMM INC	\$4,405.00	25.11%
01/31/2002	WORLDCOM INC 200202 10 CALL	\$3,375.00	19.24%
02/28/2002	ABGENIX INC	\$7,220.00	67.27%
02/28/2002	GLOBAL CROSSING LTD	\$145.20	1.35%
02/28/2002	MSH ENTERTAINMENT CORP	\$42.50	0.40%

CONCENTRATION ANALYSIS RAW DATA

INVESTOR V. BROKERAGE FIRM
Account Number: AB-12346

Month Ending	Issue	Value	% of Portfolio
02/28/2002	QUALCOMM INC	\$3,325.00	30.98%
03/28/2002	ABGENIX INC	\$4,722.50	53.50%
03/28/2002	GLOBAL CROSSING LTD	\$239.80	2.72%
03/28/2002	MSH ENTERTAINMENT CORP	\$100.00	1.13%
03/28/2002	QUALCOMM INC	\$3,764.00	42.65%